



MORNING REPORT

Have Good Trading Day

FRIDAY



**Price is what you pay.
Value is what you get.**

- Warren Buffet



MARKET PULSE

INDIAN INDICES

NAME	CMP	NET CH.	%
SENSEX	33573.22	-27.05	-0.08
NIFTY	10423.80	-16.70	-0.16

INDIAN ADR'S

SYMBOL	CLOSE	GAIN/ LOSS %
DRREDDY	37.62	+5.47
HDFCBANK	94.96	+1.78
ICICIBK	9.63	+1.26
INFY	14.64	0
TATA MOTOR	33.09	0
WIPRO	5.18	-0.58

FII AND MF ACTIVITY

SYMBOL	
FIIs Eq (Provisional)	+1032.88
DII's Eq (Provisional)	-456.51
FIIs Index Future	-759.72
FIIs Index Options	+3574.14
FIIs Stock Future	-332.63
FIIs Stock Options	+63.07

CURRENCY

CURERNCY	RBI RATE
RUPEE - \$	64.5930
EURO	75.2831
YEN 100	56.7200
GBP	85.7860

TOP STORY

- PNB authorised management for partially Stake sale in PNB Housing Limited and approved to offload entire stake in Principal PNB Asset Management Company and Principal Trustee Company
- Dr Reddy's Laboratories announces the launch of generic Azacitidine for Injection in the Canadian Market
- OBC says Issue of Basel III Compliant Additional Tier 1 Bonds (Private Placement) was opened on 02.11.2017 The Issue was fully subscribed to the extent of Rs.1000 crore
- Lupin launches generic Acticlate® Tablets in the US
- Max Life keen to increase its stake in Lakshmi Vilas Bank upto 10%
- Brigade Enterprises plans to invest 3000cr in Office Realty over three years
- Adani Enterprises In talks with China Machinery Engineering for financing of coal mine project in Australia
- Piramal Group in race for Binani, Electrosteel Steels

MARKET PULSE

GLOBAL INDICES

NAME	CMP	NET CH.	%
DOW	23516.26	+81.25	+0.35
NASDAQ	6714.94	-1.59	-0.02
NIKKEI	22539.12	+119.04	+0.53
HANG SENG	28591.00	+73.36	+0.16
SGX NIFTY	10465.00	+10.00	+0.10

WORLD COMMODITIES

FUTURE	CMP	%
CRUDE	54.80	+0.48
NATURAL GAS	2.934	0
GOLD	1277.88	-0.02
SILVER	17.126	-0.06
COPPER	3.143	+0.16

WORLD EVENTS

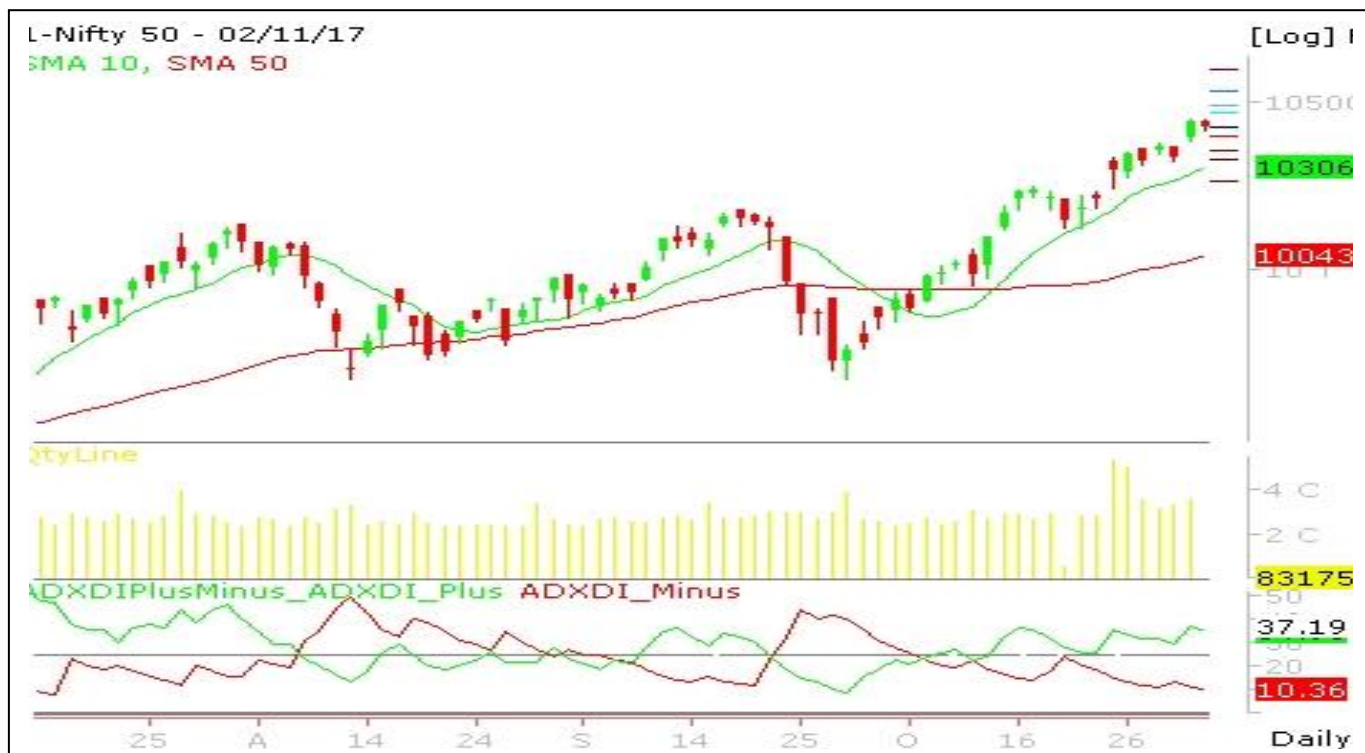
USD : Average Hourly Earnings m/m
: Non-Farm Employment Change
: Unemployment Rate
: ISM Non-Manufacturing PMI
GBP : Services PMI

RESULT TODAY

GODREJAGRO, GODREJPROP,
HINDALCO, PFC, PNB, SCI,
TATAPOWER, TITAN,
TORENTPHARMA, UCOBANK,
VRLLOG, UNIONBANK.



NIFTY CHART



MARKET COMMENTARY

Nifty slipped 16.70 points or 0.16% to settle at 10,423.80, its lowest closing level since 31 October 2017. The index rose 12.50 points, or 0.12% at the day's high of 10,453, its record high level. The index fell 27.95 points, or 0.27% at the day's low of 10,412.55.

Sensex fell 27.05 points or 0.08% to settle at 33,573.22, its lowest closing level since 31 October 2017. The index rose 57.30 points, or 0.17% at the day's high of 33,657.57, its record high level. The index fell 73.27 points, or 0.22% at the day's low of 33,527.

Among the sectoral indices on BSE, the BSE Healthcare index (up 2.48%), the BSE Telecom index (up 0.75%), and the BSE Power index (up 0.34%) outperformed the Sensex. The BSE FMCG index (down 0.93%), the BSE Auto index (down 0.61%), the BSE Bankex (down 0.17%), the BSE Metal index (down 0.3%) and the BSE Oil & Gas index (down 0.34%) underperformed the Sensex.

Nifty likely to trade in the range of 10347-10552

MARKET LEVELS

	CMP	SUPPORT LEVELS				RESISTANCE LEVELS			
NIFTY	10423.80	10405	10388	10347	10306	10446	10470	10511	10552
USDINR	64.545	64.51	64.47	64.40	64.33	64.58	64.61	64.68	64.75



BULK DEALS (BSE)

SCRIP	CLIENT NAME	BUY/SELL	QUANTITY	PRICE
CANDC	ASHIKA SHARE TRADING PRIVATE LIMITED	B	150,749	76.77
VJTFEDU	VINAY DHARAMCHAND JAIN	S	104,000	60
SSWRL	RAJ KUMAR PASRICHA	S	44,000	16.2
RDBRL	SHEETAL DUGAR	S	500,000	54
JOONKTOLL	MUGNEERAM BANGUR & COMPANY LLP	S	600,000	156.75

BULK DEALS (NSE)

SCRIP	CLIENT NAME	BUY/SELL	QUANTITY	PRICE
A2ZINFRA	IL&FS FINANCIAL SERVICES LTD - PROPRIETARY PORTFOLIO	SELL	2250322	38.22
SABTN	STATE BANK OF INDIA (S)	SELL	291111	31.12
STAMPEDE	DHARA TECHNOSYSTEM LLP	SELL	1706288	6.82
AGROPHOS	SANJAY GUPTA	BUY	180000	27.14
CANDC	ASHIKA SHARE TRADING PVT LTD	BUY	142903	76.02

SCRIP'S IN F&O BAN

(To resume for normal trading below 80% of market wide limit required)

JSWENERGY, WOCKPHARMA, HDIL, IBREALEST

Initial Public Offering (IPO)

Company Name	Security type	Issue Start Date	Issue End Date	Status
NEW INDIA ASSURANCE	EQ	01 NOV	03 NOV	AVOID
KHADIM INDIA LTD	EQ	02 NOV	06 NOV	AVOID



NIFTY 50 STOCKS: SUPPORT & RESISTANCE

Symbol	Close	Support 1	Support 2	Pivot Point	Resistance1	Resistance2
ACC	1799	1786	1772	1810	1824	1849
ADANI PORTS	437	430	424	435	442	447
AMBUJACEM	280	277	275	281	284	288
ASIANPAINT	1178	1169	1160	1175	1185	1191
AUROPHARMA	789	772	755	785	802	815
AXISBANK	532	526	520	532	538	544
BAJAJ-AUTO	3241	3212	3184	3245	3274	3307
BANKBARODA	170	167	165	171	173	177
BHARTIARTL	543	533	523	541	551	559
BHEL	98	96	94	97	99	101
BOSCH LTD	20990	20883	20775	21016	21124	21257
BPCL	543	537	531	542	548	553
CIPLA	636	627	617	635	644	652
COALINDIA	291	286	282	289	294	297
DRREDDY	2411	2364	2316	2402	2450	2488
EICHERMOT	31140	30963	30785	31178	31355	31570
GAIL	471	467	462	473	477	484
HCLTECH	858	846	834	853	865	872
HDFC	1762	1747	1732	1758	1774	1785
HDFCBANK	1822	1816	1810	1823	1829	1836
HEROMOTOCO	3736	3698	3659	3751	3789	3843
HINDALCO	271	266	261	271	276	281
HINDUNILVR	1242	1233	1224	1247	1256	1270
ICICIBANK	317	312	307	316	321	325
IDEA	107	102	97	105	110	113
INDUSINDBK	1628	1618	1608	1634	1643	1659
INFRA TEL	419	413	408	421	426	434
INFY	923	920	917	923	926	929
ITC	266	264	262	267	269	272
KOTAKBANK	1020	1014	1008	1023	1029	1039
LT	1211	1204	1198	1210	1217	1222
LUPIN	1061	1040	1020	1053	1073	1086
M&M	1335	1328	1320	1339	1346	1357
MARUTI	8226	8193	8161	8234	8266	8307
NTPC	180	178	175	179	182	183
ONGC	188	186	185	189	191	194
POWERGRID	215	213	210	214	217	219
RELIANCE	947	942	937	949	954	961
SBIN	314	311	307	317	320	327
SUNPHARMA	563	550	536	561	575	586
TATAMOTORS	435	430	425	435	440	446
TATAMTRDVR	242	239	236	242	245	248
TATAPOWER	85	84	83	85	86	87
TATASTEEL	706	699	693	704	711	716
TCS	2626	2597	2568	2636	2665	2703
TECHM	468	459	449	470	480	491
ULTRACEMCO	4399	4372	4345	4410	4438	4476
VEDL	341	338	334	341	344	348
WIPRO	293	292	291	294	295	297
YESBANK	320	318	315	321	324	327
ZEEL	529	525	520	530	535	541



NSE CIRCULARS

NSE Download Ref No. : NSE/CML/36217 : Listing of Security (IPO) Reliance Nippon Life Asset Management Limited w.e.f. November 06, 2017

NSE Download Ref No. : : NSE/INVG/36224: SEBI final order in the matter of Shine India Agro Industries Limited

NSE Download Ref No. : NSE/COMP/36218: Segmental Surrender of Membership

NSE Download Ref No. : : NSE/CML/36223: Listing of further issues of Arvind SmartSpaces Limited, Dewan Housing Finance Corporation Limited, Equitas Holdings Limited, ICICI Bank Limited, ITC Limited, Navkar

Corporation Limited and Radico Khaitan Limited w.e.f. November 03, 2017

NSE Download Ref No. : NSE/SURV/36221: Trade for Trade - Tube Investments of India Limited (TIINDIA) w.e.f. November 16, 2017.

NSE Download Ref No. : NSE/CML/36170: Suspension of trading in Equity Shares of REI Six Ten Retail Limited for non-compliance with SEBI (LODR) Regulations, 2015 w.e.f. November 07, 2017

NSE Download Ref No. : NSE/INSP/36220: Consolidated Circular – Inspection Department

NSE Download Ref No. : NSE/INVG/36222: SEBI final order in the matter of Mangalam Agro Products Limited

BOARD MEETINGS/ CORPORATE ACTION

COMPANY NAME	DATE	PURPOSE
EXIDEIND	3-Nov-17	Interim Dividend - Rs 1.60 Per Share
ONGC	3-Nov-17	Interim Dividend
GEECEE	3-Nov-17	Interim Dividend - Rs 1.50 Per Share (Purpose Revised)
SUPRAJIT	6-Nov-17	Annual General Meeting/ Dividend - Re 0.60 Per Share
JAYAGROGN	6-Nov-17	Interim Dividend
SUPREMEIND	6-Nov-17	Interim Dividend
MARICO	6-Nov-17	Interim Dividend
GILLETTE	6-Nov-17	Dividend - Rs 10/- Per Share
SHARDACROP	6-Nov-17	Interim Dividend - Rs 2/- Per Share
DABUR	7-Nov-17	Interim Dividend
SAGCEM	7-Nov-17	Interim Dividend - Rs 2.50 Per Share
SYMPHONY	7-Nov-17	Interim Dividend
PHILPCARB	7-Nov-17	Interim Dividend - Rs 6/- Per Share
PGHH	7-Nov-17	Dividend - Rs 27/- Per Share



NEWS & RUMOURS:

- **Gold (Spot Dollar) major support = \$1251/\$1220 & Resistance = \$1296/\$1339.**
- **Crude oil range->\$48 to \$58.**
- **U.S. Stocks, Dollar Retreat on Tax Plan Details: Markets Wrap:** - U.S. stocks fell with the dollar, while Treasuries advanced as investors reacted to details of the Republican plan to cut taxes.
- **Dollar Continues to Slide Ahead of Fed Chair Pick:** - The dollar continued to slide on Thursday ahead of President Donald Trump's decision on the next chair of the Federal Reserve and as House Republicans unveiled their tax-reform bill.
- **Natural Gas Futures Stay Higher After Weekly Storage Data:** - U.S. natural gas futures moved higher on Thursday, after data showed that domestic supplies in storage increased broadly in line with market expectations last week. The U.S. Energy Information Administration said in its weekly report that natural gas storage in the U.S. rose by 65 billion cubic feet (bcf) in the week ended Oct. 27, compared to forecasts for a build of 62 billion.
- **Crude Oil Prices Under Pressure but Remain Near Recent Highs:** - Crude oil prices were under pressure on Thursday, weighed by a rise in U.S. crude exports, although optimism over a rebalancing of the market kept the commodity near recent highs.
- **Gold Prices Little Changed, All Eyes on Fed Pick:** - Gold prices were little changed on Thursday, as markets were awaiting the nomination of the next Federal Reserve head as well as the unveiling of a fiscal plan, while positive U.S. data lent some support to the dollar.

TRENDS & OUTLOOK – DATE: 03-Nov- 2017

PRECIOUS METALS:

COMMDITY (MCX)	S2	S1	PIVOT POINT	R1	R2
GOLD (Dec)	28755	29000	29270	29610	29925
SILVER (Dec)	3700	38300	39600	41200	42345

BASE METALS

COMMDITY (MCX)	S2	S1	PIVOT POINT	R1	R2
COPPER (Nov)	436	441	448	454	460
ZINC (Nov)	203.90	207.25	211.20	215.55	219.60
LEAD (Nov)	150.60	154.20	159.25	163.65	167.70
NICKEL (Nov)	770	786	815	843	866

ENERGY

COMMDITY (MCX)	S2	S1	PIVOT POINT	R1	R2
CRUDE OIL (Nov)	3275	3400	3510	3636	3720
NATURAL GAS (Nov)	181	186	190	196	203

DATA TALKS : TODAY'S ECONOMIC DATA :

Caixin Services PMI of China, Average Hourly Earnings m/m, Non-Farm Employment Change, Unemployment Rate, Trade Balance, Final Services PMI, ISM Non-Manufacturing PMI, Factory Orders m/m, FOMC Member Kashkari Speaks.



LET THE
WOMAN
POWER RISE

**WOMEN
DESK**

All the Ladies in the house are
cordially invited to come
& explore their trading talents.

TOLL FREE: 18001030059

SIP CALCULATOR

Calculates the
Future Value
of an
Investment



SIP Amount (Rs.)
10,000



Investment Frequency
Monthly



Expected Return (p.a.)
14.00%

Year	Principal (Rs.)	Future Value (Rs.)	Appreciation
1	120,000	128,918	8,918
2	240,000	275,884	35,884
3	360,000	443,426	83,426
4	480,000	634,423	154,423
5	600,000	852,161	252,161
10	1,200,000	2,492,923	1,292,923
15	1,800,000	5,652,071	3,852,071
20	2,400,000	11,734,741	9,334,741
25	3,000,000	23,446,403	20,446,403
30	3,600,000	45,996,206	42,396,206
35	4,200,000	89,413,927	85,213,927
40	4,800,000	173,011,040	168,211,040
45	5,400,000	333,970,140	328,570,140
50	6,000,000	643,883,137	637,883,137



Indira Securities Pvt. Ltd

Member: NSE, BSE, CDSL

Indira Commodities Pvt. Ltd.

Member: MCX, NCDEX

Head Office: 'Ramavat House', E-15, Saket Nagar, Indore-452018

Customer Care No.: 4097170-173, 93031-72345 | customercare@indiratrade.com | www.indiratrade.com

**Registered Office**

Indira House, 3rd Floor, 5 Topiwala Lane,
Opp. Lemington Road Police Station, Grant Road (East), Mumbai - 400007.

Corporate Office

'Ramavat House' E-15, Saket Nagar, Indore - 452018 (M.P.)

Customer Care

Tel: +91-731-4097170/ 71/ 72/ 73/ 74 M. +91 93031 72345
Email: customercare@indiratrade.com www.indiratrade.com

**INSTITUTIONAL DEALING UNIT**

Africa House, 5, Topiwalla Lane, Lamington Road, Mumbai, 400007

Tel: +91 2230080678; Email: ie@indiratrade.com

Disclaimer

This report is for private circulation within the Indira Group. This report is strictly confidential and for information of the selected recipient only and may not be altered in any way, transmitted to, copied or distributed, in part or in whole, to any other person or to the media or reproduced in any form. This report should not be construed as an offer or solicitation to buy or sell any securities or any interest in securities. It does not constitute a personal recommendation or take into account the particular investment objectives, financial situations, or any such factor. The information, opinions estimates and forecasts contained here have been obtained from, or are based upon, sources we believe to be reliable, but no representation of warranty, express or implied, is made by us to their accuracy or completeness. Opinions expressed are our current opinions as of the date appearing on this material only and are subject to change without notice.